

Selfbuild *Today*

MEDIA PACK
www.selfbuildtoday.co.uk



ABOUT SELFBUILD TODAY

Selfbuild Today is the UK's premier quarterly selfbuild magazine, sent personally to every selfbuilder who has received planning approval for their project.

From foundations to finishes, we provide inspiration, expert advice, case studies and product showcases to help selfbuilders navigate every stage of their journey.

What We Offer:

- In-depth features on successful projects
- Guidance from architects, surveyors, and sustainability experts
- The latest in design, planning, and construction innovation
- Product round-ups and supplier directories.

OUR AUDIENCE

8,500
printed circulation

**Verified, engaged
and ready to build**

Thanks to our partnership with Barbour ABI, **Selfbuild Today** is mailed to every person in the UK who receives planning permission for a selfbuild project.

Each person receives their free copy of **Selfbuild Today** for a full year – so each quarterly issue reaches them at a different stage of their project.

- 100% of our readership is actively engaged in a live project
- Each reader is at the perfect decision-making point for choosing suppliers, services, and solutions for every phase of the build.
- Targeted, high-value audience – no wasted impressions
- Possibly the most cost-effective way to put your brand in front of every selfbuilder across the UK.



EDITORIAL

Every quarter, **Selfbuild Today** features all the latest news from the selfbuild industry, with everything our readers need to know about designing, planning, building and finishing their selfbuild projects.

Every issue includes details of each stage of the selfbuild process:

- **Finance & Insurance:** Costs, mortgages, contingencies and money management
- **Groundworks:** Foundations, services, excavation, clearance and footings.
- **First Fix:** Walls, roofs, windows, framing, insulation, acoustics and cladding.
- **Second Fix:** Flooring, internal doors, skirting, electrical systems, lighting and plumbing systems.
- **Fittings:** Bathroom fixtures, kitchens and heating.
- **Interior Design:** Paint, furniture and finishing touches.



ADVERTISING OPPORTUNITIES

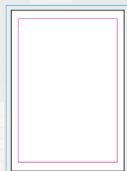
MECHANICAL DATA – PRINT

DOUBLE PAGE SPREAD



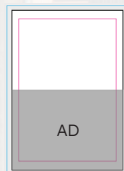
Height x width (mm)
Trim 297 x 420
Bleed 303 x 426

FULL PAGE



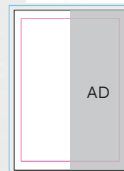
Height x width
Trim 297 x 210
Bleed 303 x 216

HALF PAGE HORIZONTAL



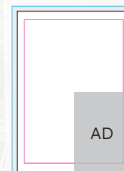
Height x width
Trim size: 145 x 210

HALF PAGE VERTICAL



Height x width
Trim: 297 x 95

QUARTER PAGE



Height x width
Type area: 133 x 93

RATES AND POSITIONS

	1-3 insertions	Four insertions
DPS	£2,200	£1,800
Full Page	£1,200	£1,000
Half-Page	£800	£650
Quarter-page	£500	£400

DIGITAL

	3 months	6 months	12 months	Size (pixels)
Leaderboard	£2,000	£3,250	£5,000	720w x 100h
Large MPU	£1,500	£2,500	£4,000	300w x 300h
Small MPU	£1,000	£1,750	£3,000	300w x 150h

CONTACT US

For more information about your advertising and editorial needs, contact:

ADVERTISING

Jake Roxborough

jake@mappedout.media
07482 181961

Jim Moore

jim@mappedout.media
07414 237 853

EDITORIAL

Jennie Ward

jennie@mappedout.media
07971 968611

Selfbuild Today

Mapped Out Media
The Old Barn
Wood Street
Swanley
BR8 7PA

www.selfbuildtoday.co.uk



@Selfbuild-Today



@selfbuildtoday



@Selfbuild-Today

